



## Hierarchy and Staff Deployment of Bearhugs Nursery

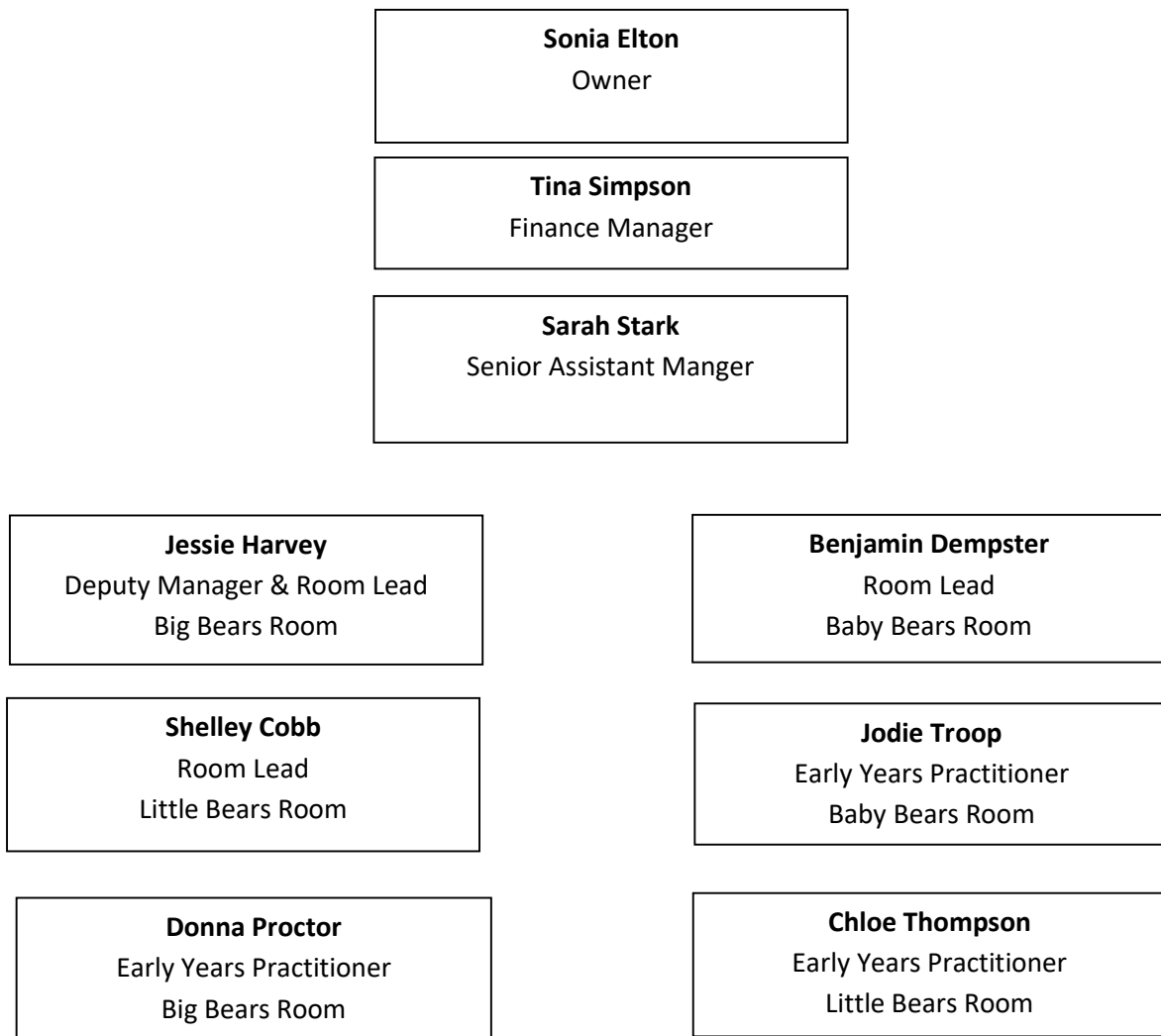
It is the policy of Bearhugs Nursery that there is a Senior member of our Staff team on the premises at all times.

Tina Simpson is our Finance Manager.

Sarah Stark is our setting Manager, if for any reason Sarah is not on the premises Jessie Hopkins or Shelley Cobb will be on hand to supervise the running of the nursery.

To enable parents, carers, practitioners, and outside agencies to understand our hierarchy we have devised our Hierarchy of Bearhugs policy.

Below you will find our hierarchy for Bearhugs at Horncastle and their roles in the setting.





Our Apprentices

Chloe Spooner

Lucie Gentry

Our Support Staff are:

Graeme Midgley  
Nursery Cook

Signed on behalf of the setting by:

Manager: Sarah Stark

Date: 8<sup>th</sup> November 2021

Review Date: 3<sup>rd</sup> May 2022